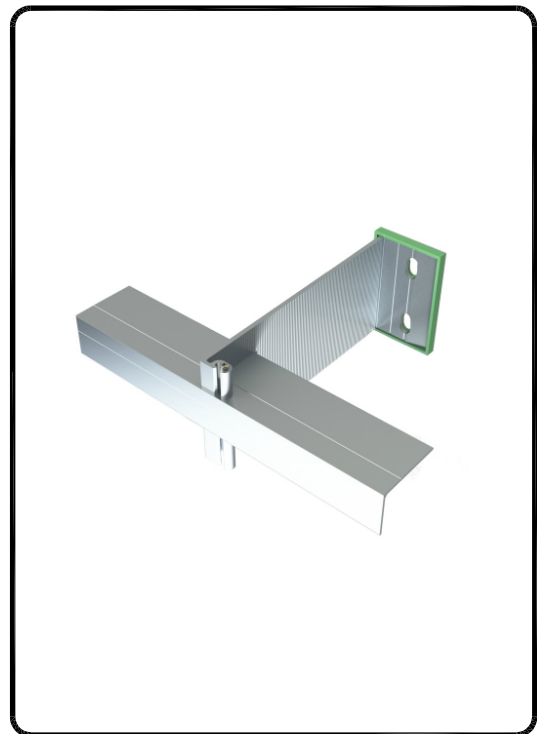


aluminium support system for
rainscreen cladding

NVELOPE NH3 SYSTEM



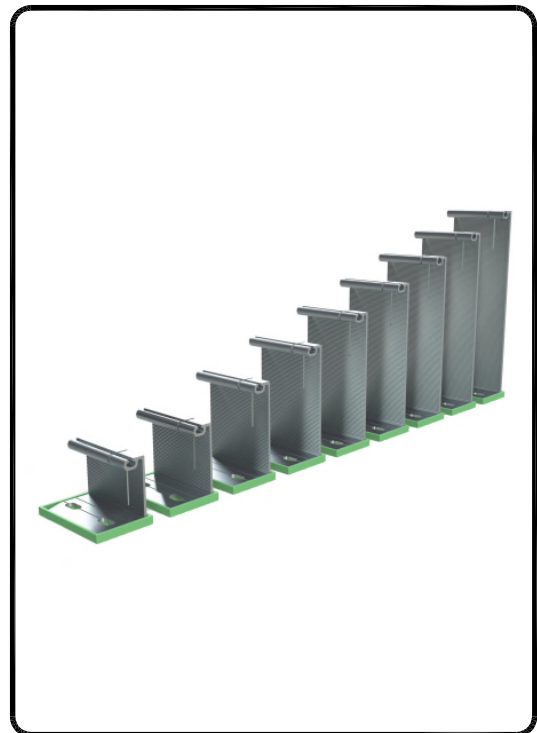
LEGEND:

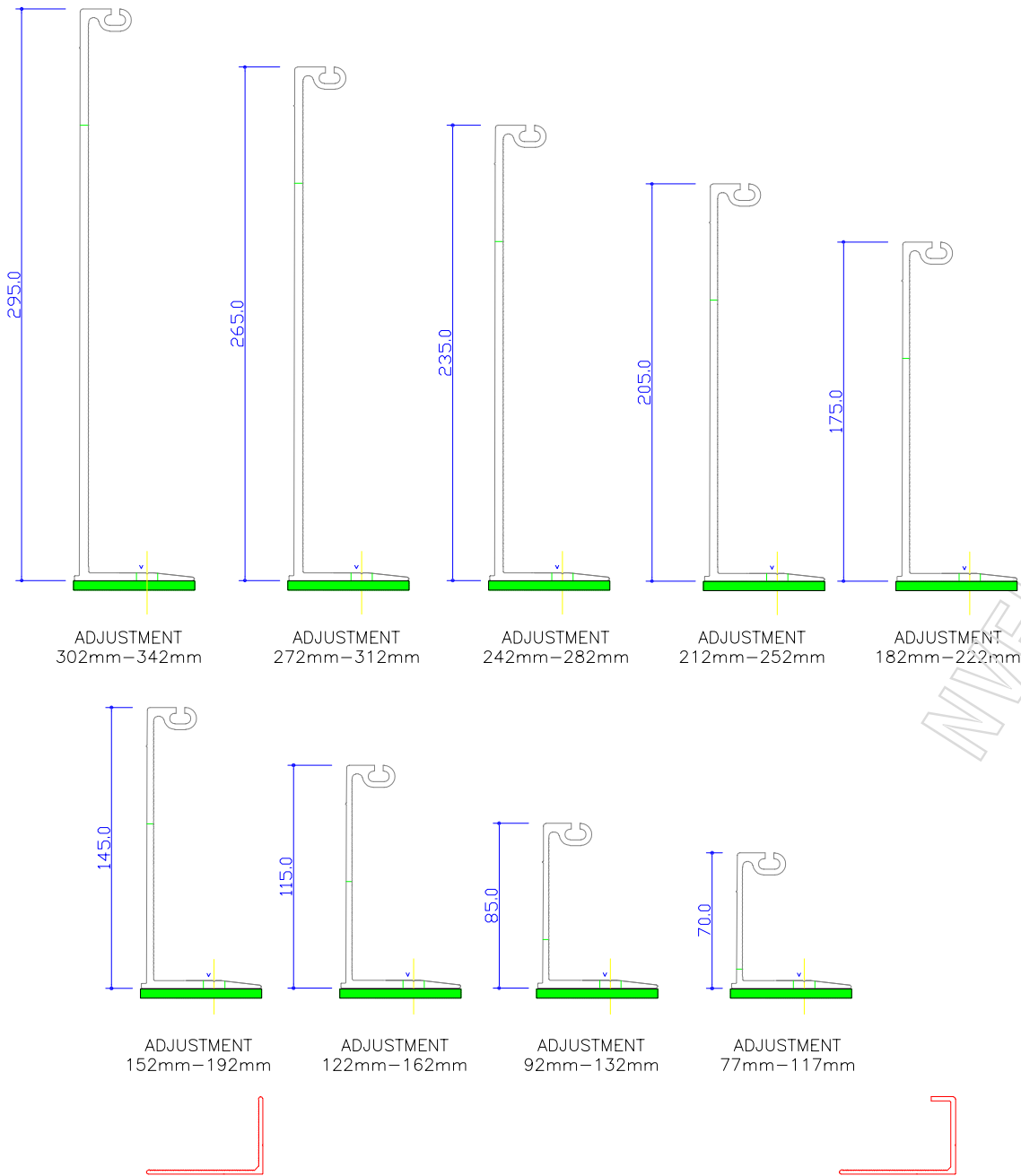
- A – Cladding
- B – Cladding-rivet

- 1 – SFS steel wall + cement board
- 2 – Nvelope – support bracket
- 3 – Stainless steel fixing
- 4 – T-(L) profile Horizontal
- 5 – Self drilling stainless steel screw SDA5-5.5-45
- 7 – Thermal insulation
- 8 – Ventilation Cavity
- 10 – NVELOPE Thermal isolator

CONTENTS:

- NH3-00 NVELOPE System detail sheet
- NH3-01 Tolerances for bracket adjustment
- NH3-02 Cladding view locations
- NH3-03 Horizontal Section
- NH3-04 Vertical Section
- NH3-05 Vertical section-base of cladding
- NH3-06 Vertical section-top of cladding
- NH3-07 Horizontal section window jamb
- NH3-08 Vertical section window sill
- NH3-09 Vertical section window head
- NH3-10 External corner
- NH3-11 Internal corner

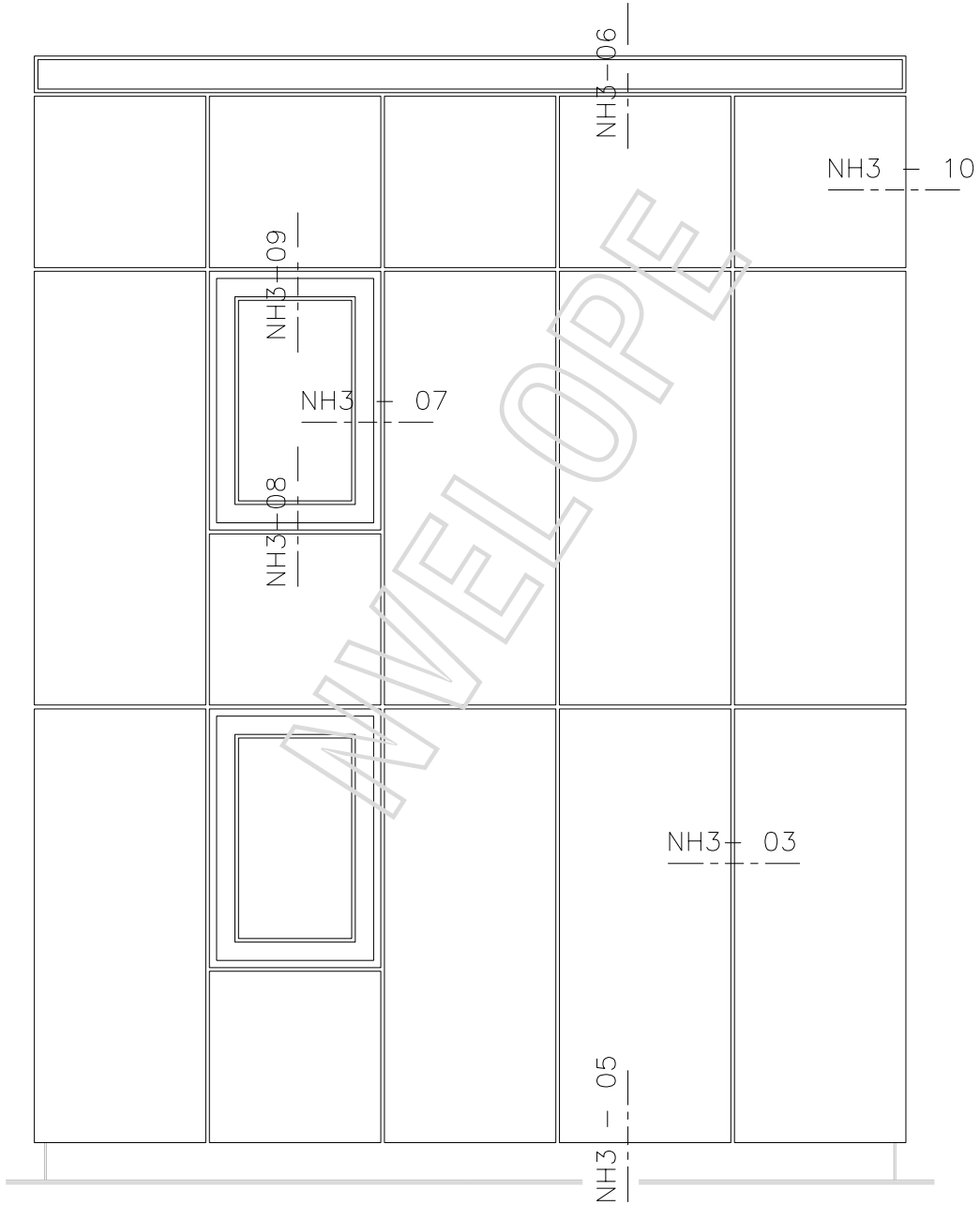




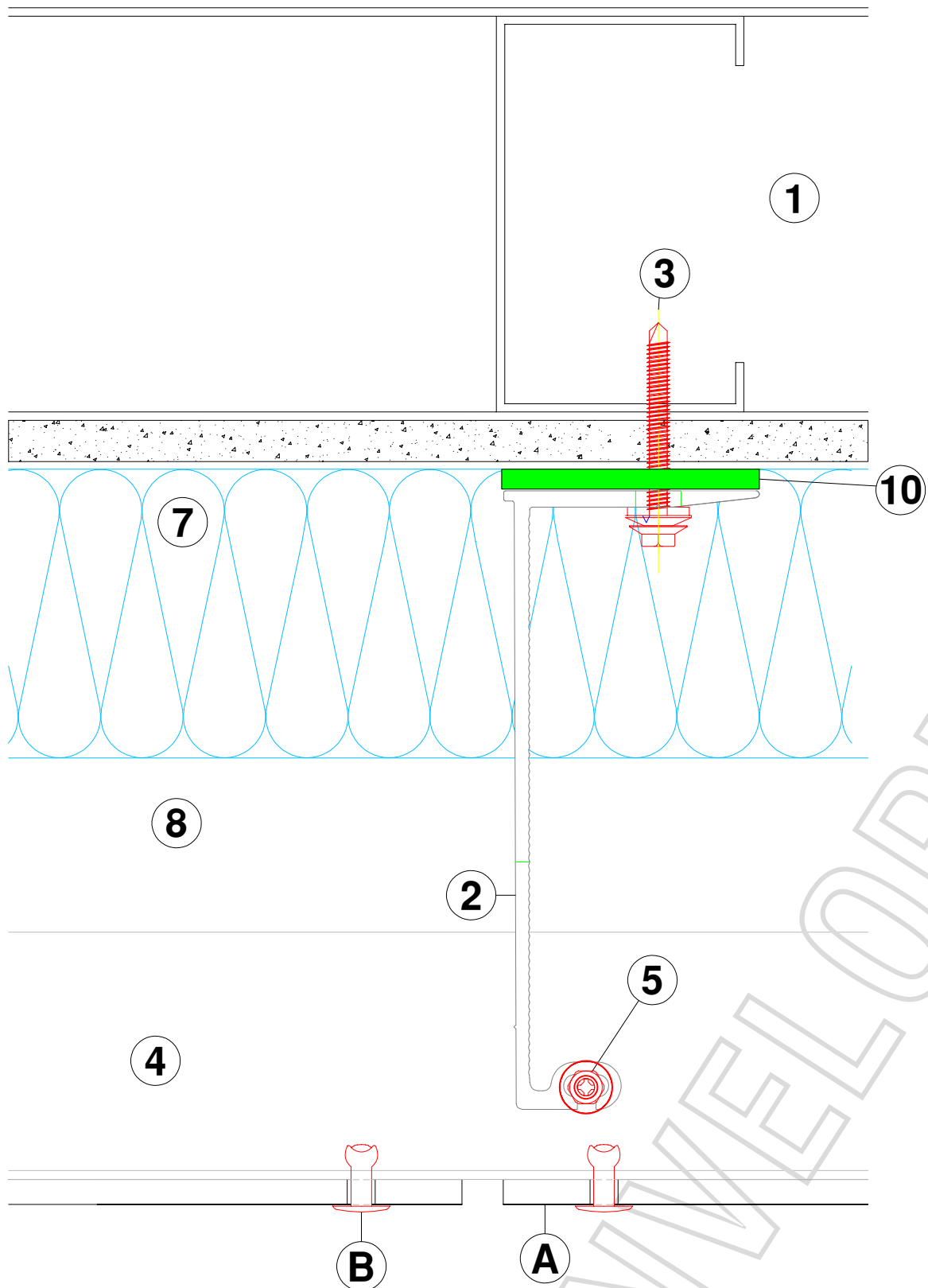
BRACKETS	Adjustment range for 60-40 L each bracket (mm)	
Nvelope 75	from 77	to 117
Nvelope 90	from 92	to 132
Nvelope 120	from 122	to 162
Nvelope 150	from 152	to 192
Nvelope 180	from 182	to 222
Nvelope 210	from 212	to 252
Nvelope 240	from 242	to 282
Nvelope 270	from 272	to 312
Nvelope 300	from 302	to 342

BRACKETS	Adjustment range for 60-40-12.5 each bracket (mm)	
Nvelope 75	from 87	to 115
Nvelope 90	from 102	to 130
Nvelope 120	from 132	to 160
Nvelope 150	from 162	to 190
Nvelope 180	from 192	to 220
Nvelope 210	from 222	to 250
Nvelope 240	from 252	to 280
Nvelope 270	from 282	to 310
Nvelope 300	from 312	to 340

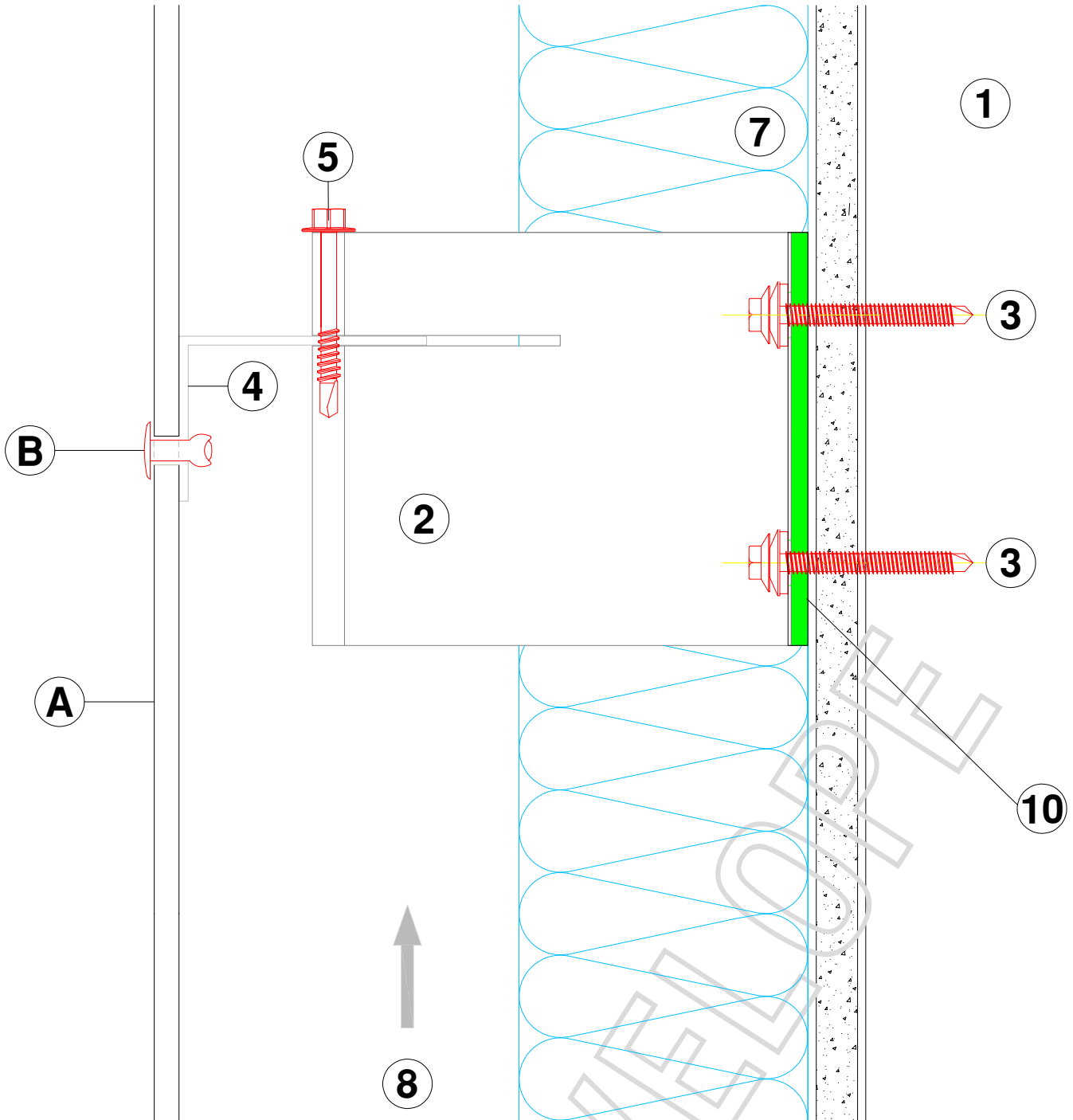
HORIZONTAL SECTIONS
TOLERANCES FOR ADJUSTMENT



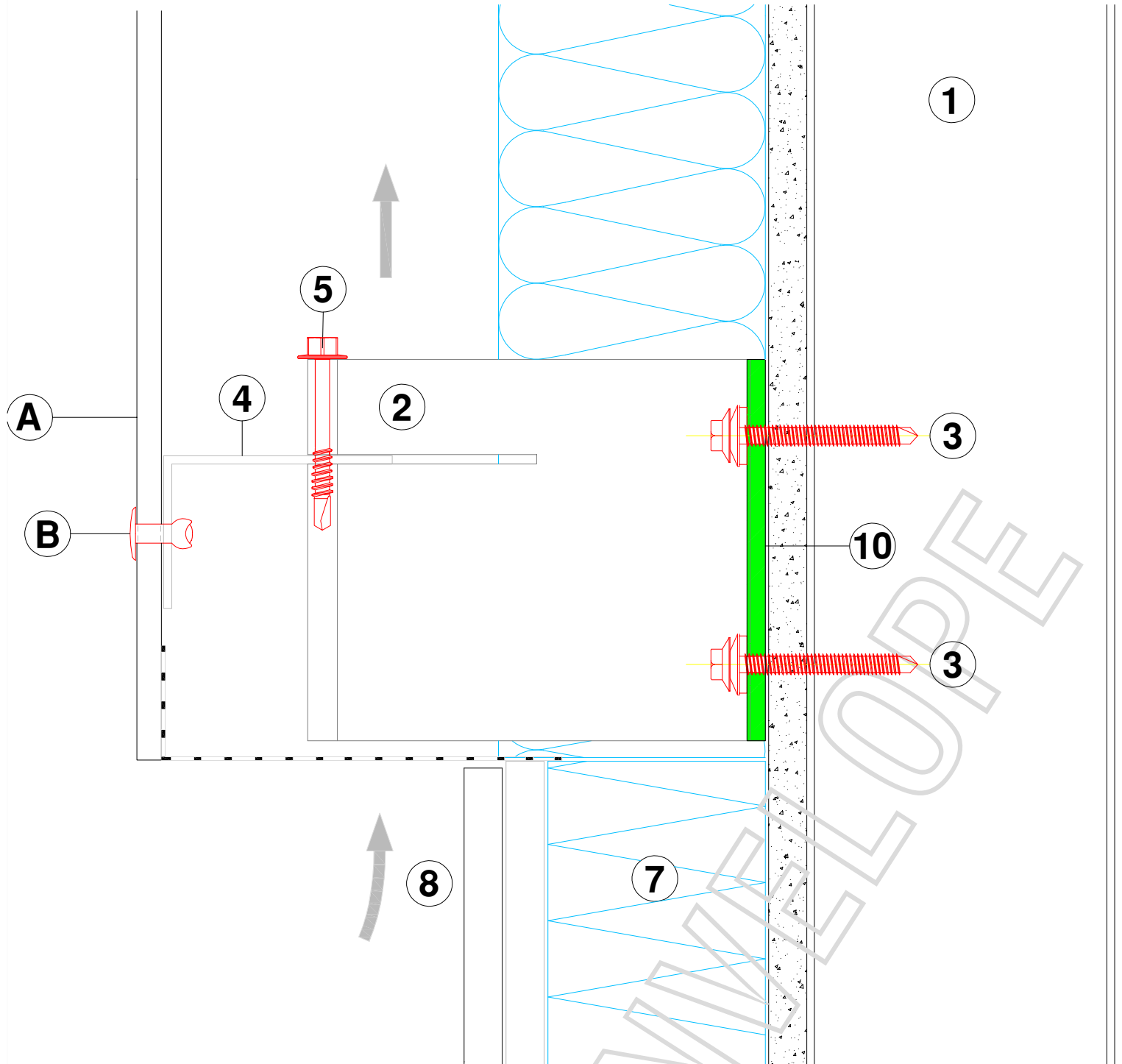
VIEW OF CLADDING - DETAIL LOCATIONS



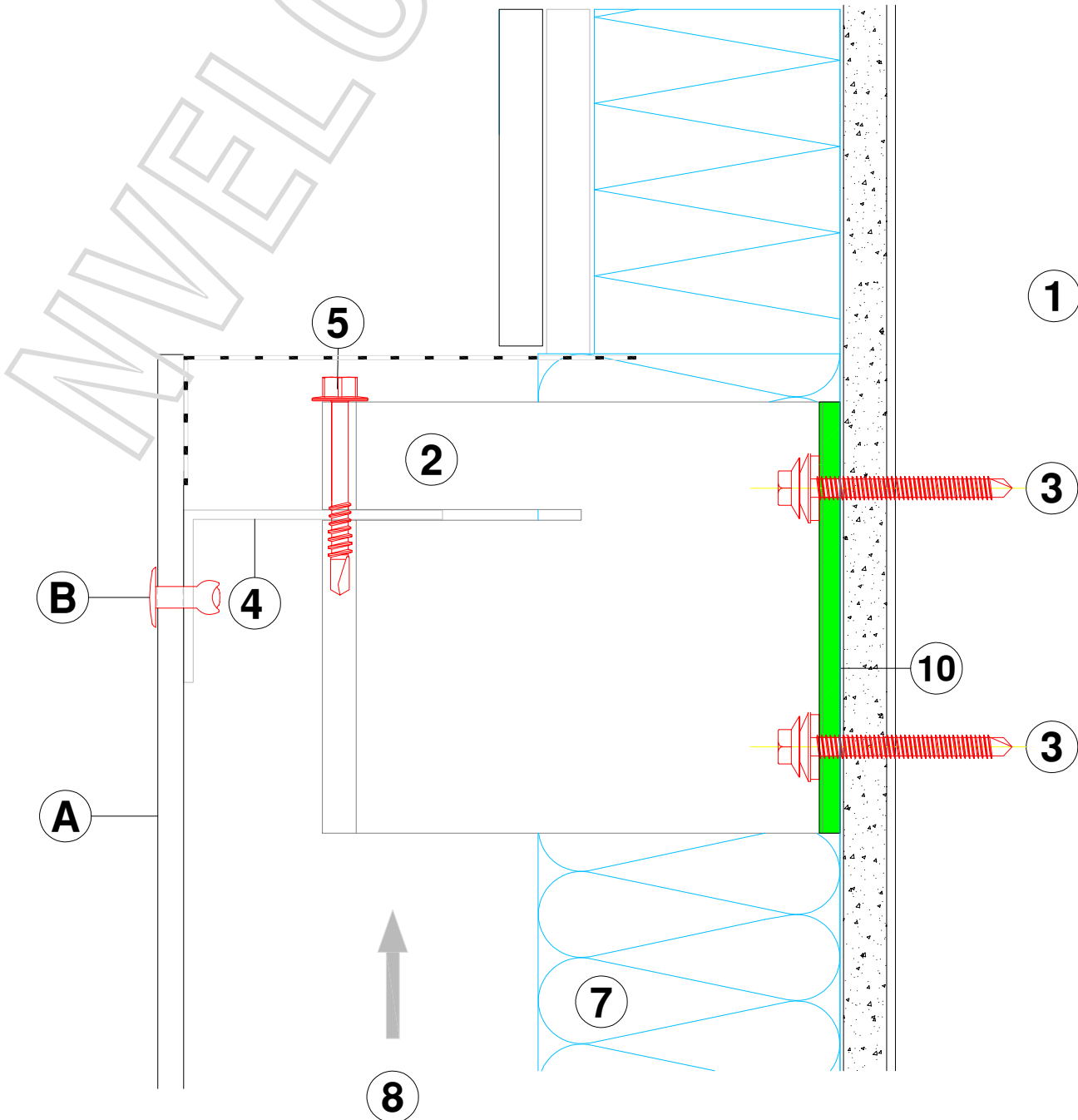
HORIZONTAL SECTION - NVELOPE NH3



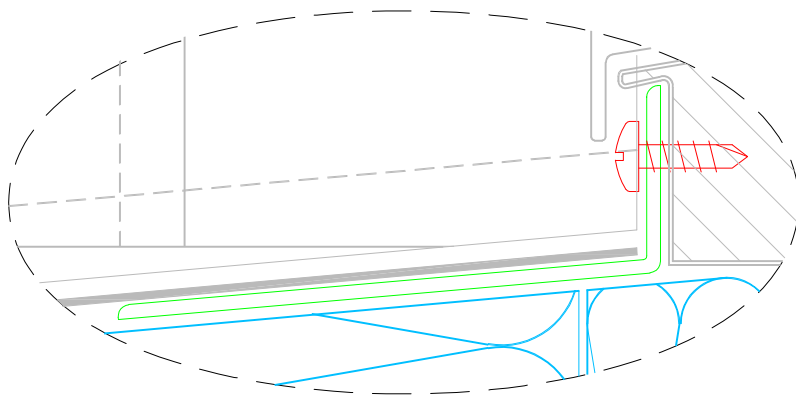
VERTICAL SECTION - NVELOPE NH3



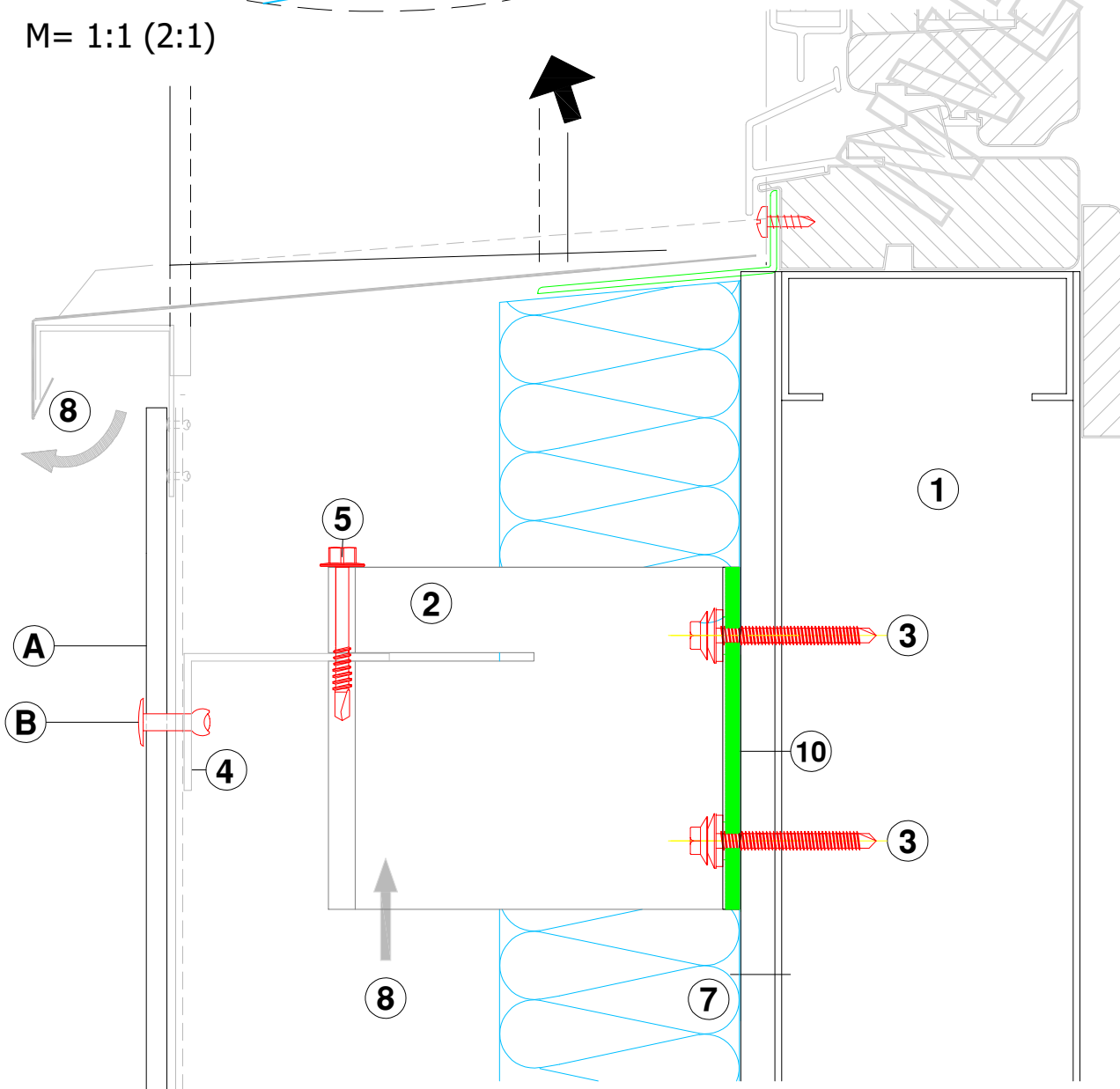
VERTICAL SECTION - BASE OF CLADDING



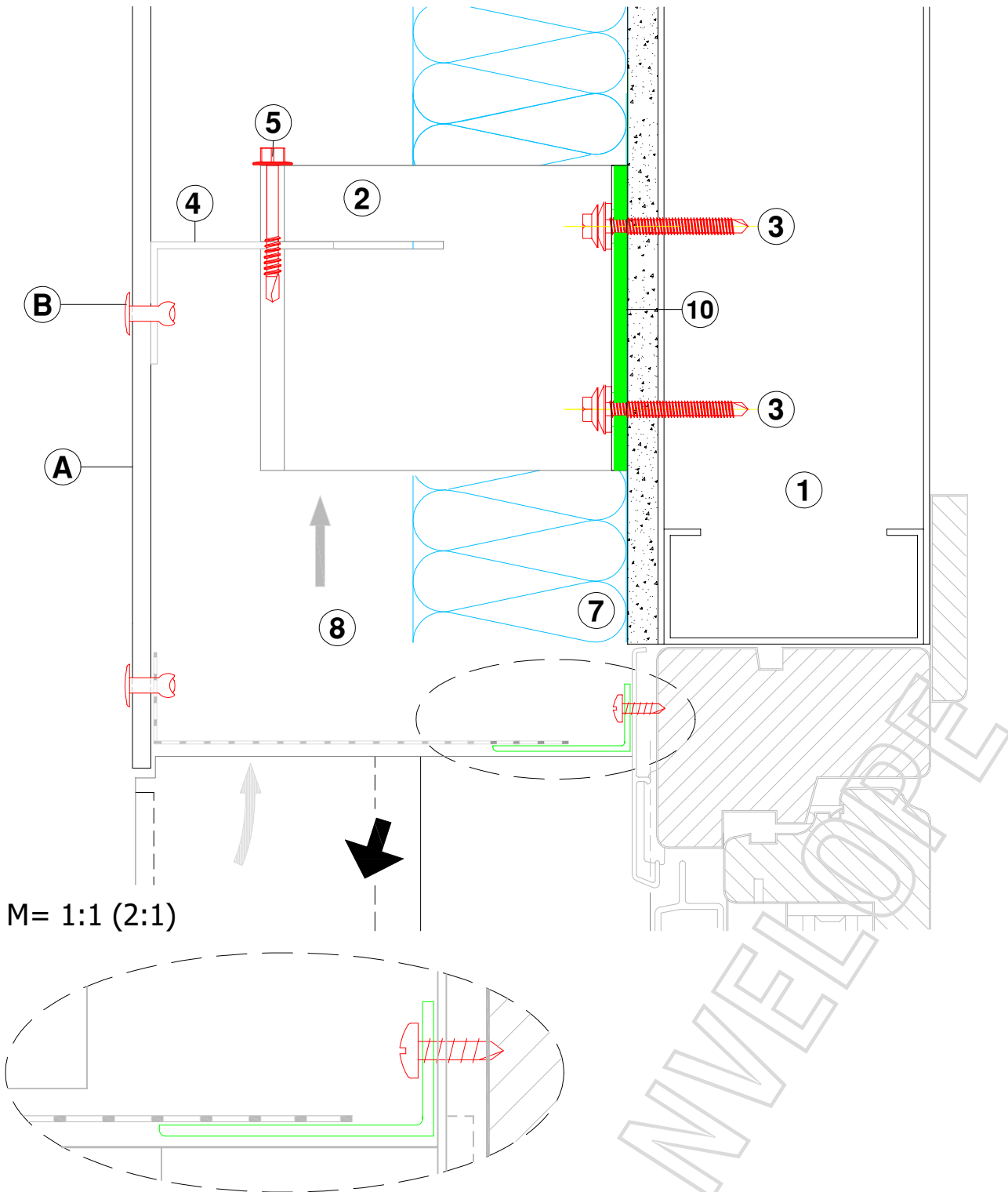
VERTICAL SECTION - TOP OF CLADDING



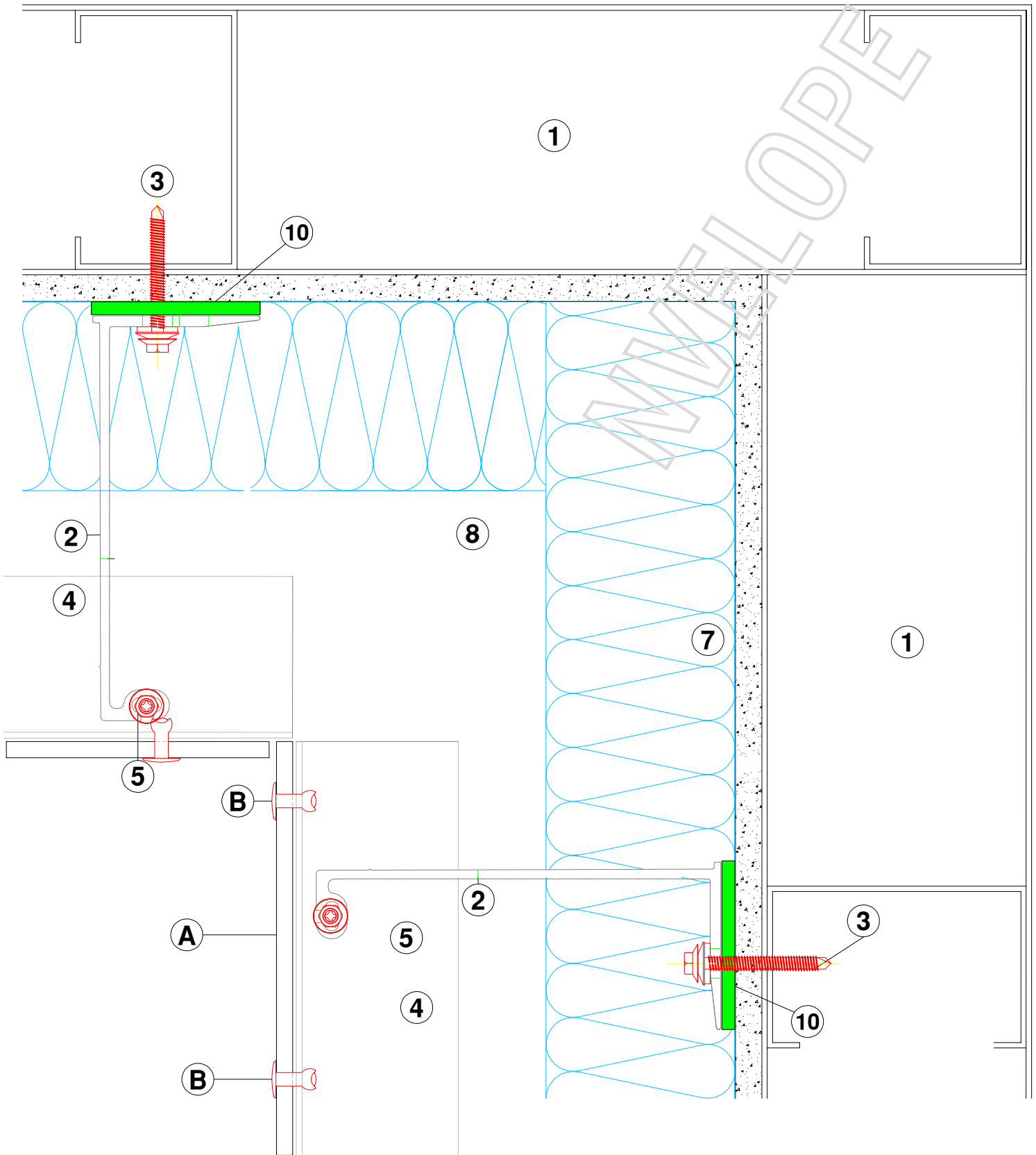
M= 1:1 (2:1)



VERTICAL SECTION - WINDOW SILL DETAIL



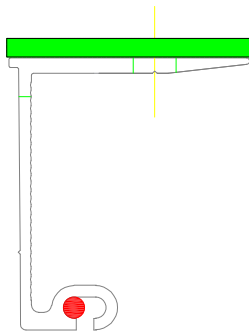
VERTICAL SECTION - WINDOW HEAD DETAIL



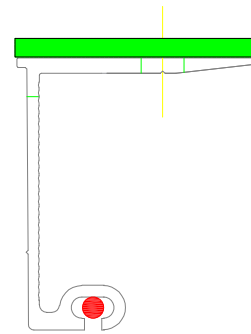
HORIZONTAL SECTION - INTERNAL CORNER

FIXED & SLIDING POINT GUIDE

● SDA5-5.5-45 Rail Fixing

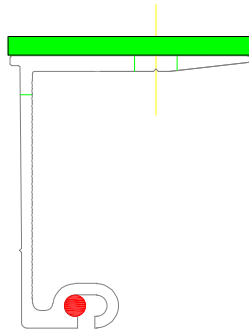


Fixed Point

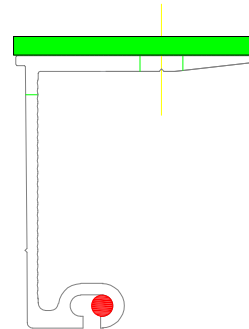


Sliding Point

Two brackets are required to create a fixed point

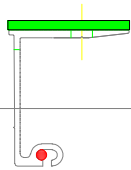


Fixed Location

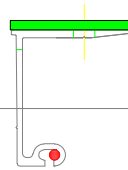


Fixed Location

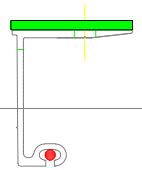
Typical Rail Configurations



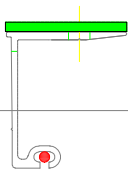
Fixed Point



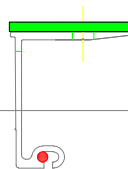
Fixed Point



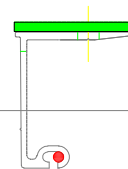
Sliding Point



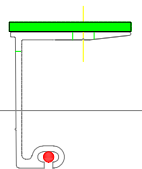
Sliding Point



Fixed Point



Fixed Point



Sliding Point

FIXED & SLIDING POINT GUIDE