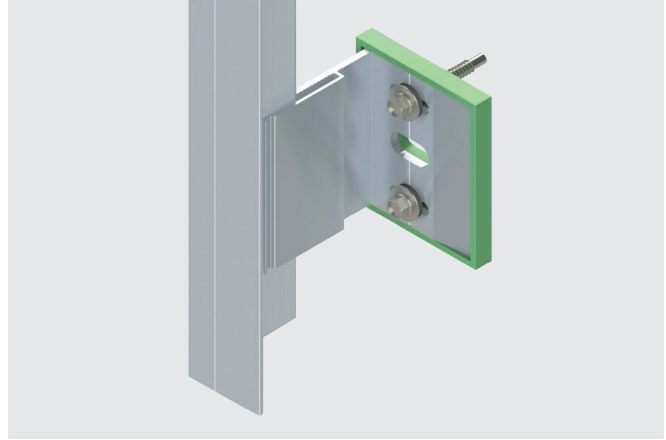
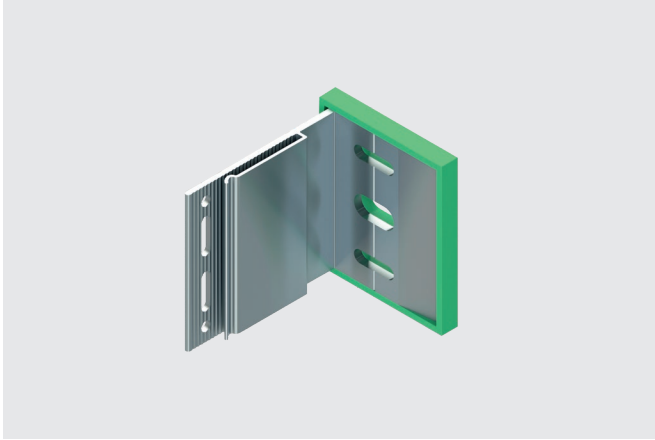


NVELOPE™ Single Universal Bracket



Features and Benefits

- Bracket design allows for rail retainment without additional tools
- Up to 1-½" adjustment range eliminates the need for shims
- Corrosion resistant and 100% recyclable
- Fastener guide marks and integrated thermal isolator to aid in constructability
- Up to a quarter inch of thermal movement
- Engineered to meet thermal code requirements

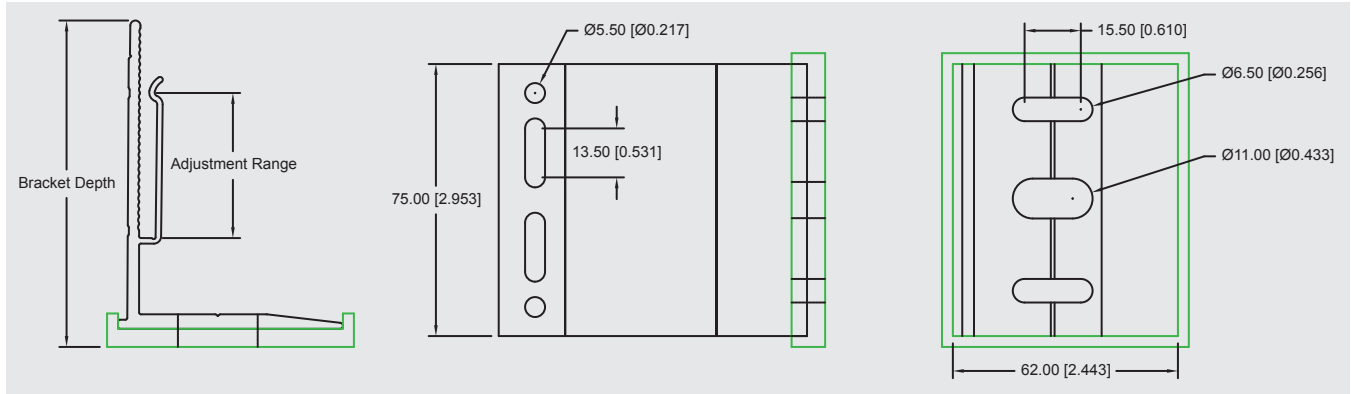
Application

- Creates a cavity between the architectural cladding and the building for the inclusion of exterior insulation
- Installs directly onto a variety of substrates including steel, wood, concrete and CMU
- Brackets are a component of the NV1 thermally broken subframe system which is used to attach architectural cladding materials utilizing vertically oriented extrusions

Product Selection

Material No.	Bracket Depth (mm)	Cavity Range				Product Code	Carton Wt. (lbs)	Carton Qty.
		Minimum		Maximum				
		(mm)	(in)	(mm)	(in)			
1582505	40	47	1.85	67	2.64	NV-VB40S	20	150
1582506	60	62	2.44	102	4.01	NV-VB60S	33	150
1582508	90	92	3.62	132	5.19	NV-VB90S	35	120
1582509	120	122	4.80	162	6.37	NV-VB120S	36	80
1582510	150	152	5.96	192	7.56	NV-VB150S	34	70
1582511	180	182	7.16	222	8.74	NV-VB180S	33	60
1582512	210	212	8.35	252	9.92	NV-VB210S	31	50
1582514	240	242	9.52	282	11.10	NV-VB240S	35	50
1582517	270	272	10.70	302	12.28	NV-VB270S	33	40
1582520	300	302	11.89	342	13.46	NV-VB300S	34	40

NVELOPE™ Single Universal Bracket



Product Specifications

Bracket Material: 6005A-T6 aluminum
 Isolator Material: Polypropylene
 Isolator Thickness: 5mm

Performance Data^{1,2,3}

Bracket Material Strength

Young's Modulus	10,100 ksi / 70 Gpa
Tensile Strength	38 ksi / 260 Mpa
Shear Strength	24 ksi / 165 Mpa
Tensile Yield	35 ksi / 240 Mpa

Material Thermal Transmittance

Bracket Conductivity:	1339 Btu-in/ft ² -hr-°F (193 W/m-K)
Isolator Conductivity:	0.81 Btu-in/ft ² -hr-°F (0.117 W/m-K)

¹ Inward Horizontal: SFS 1646 / R3

² Outward Horizontal: SFS 5900.21

³ Vertical: SFS 5901.21

Bracket Structural Values

Bracket Size	Vertical Load	Inward Horizontal Load	Outward Horizontal Load
40	542 lbf / 2.41 KN	1322 lbf / 5.88 KN	579 lbf / 2.58 KN
60	436 lbf / 1.94 KN	948 lbf / 4.21 KN	781 lbf / 3.48 KN
90	362 lbf / 1.61 KN	727 lbf / 3.23 KN	983 lbf / 4.37 KN
120	197 lbf / 0.88 KN	551 lbf / 2.45 KN	1174 lbf / 5.22 KN
150	173 lbf / 0.77 KN	440 lbf / 1.96 KN	
180	149 lbf / 0.66 KN	352 lbf / 1.56 KN	
210	125 lbf / 0.56 KN	308 lbf / 1.37 KN	
240	101 lbf / 0.45 KN	286 lbf / 1.27 KN	
270	77 lbf / 0.34 KN	264 lbf / 1.17 KN	
300	53 lbf / 0.24 KN	242 lbf / 1.07 KN	